

Estimating Version 6.2 Enhancements

With the recent release of Timberline Estimating (6.2), Windows versions of the CAD Integrator and Pricer are now available. In addition, this newest release contains a number of enhancements such as the ability to calculate or reprice estimates using a number of different cost indexes.

Timberline Estimating for Windows operating systems has been enhanced with several automation capabilities. The inclusion of the IFC-compliant CAD Integrator assures compatibility with all IFC (version 2.0) compatible CAD applications. The new cost index feature automates estimate generation and repricing based on the geographical location of your project. Also included in version 6.2 is Pricer, which automates database price updates. These and other new features provide more of what you need to raise productivity in today's competitive business environment.

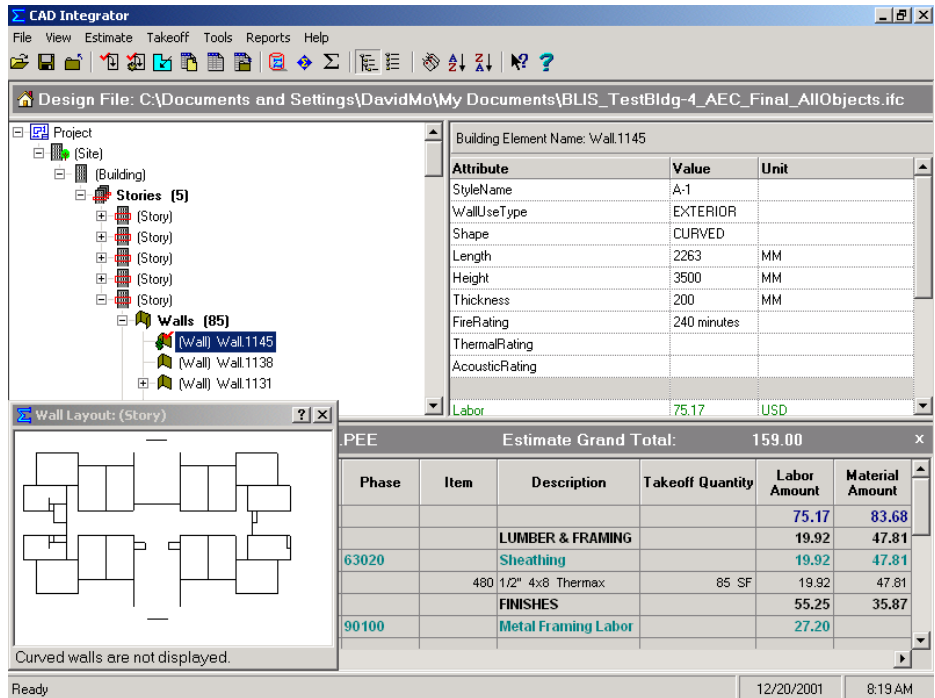
Inside this release...

Timberline Estimating clients have requested that certain features previously available in DOS versions be incorporated in versions for Windows 98, NT, and 2000. Such enhancements in version 6.2 include CAD Integrator and Pricer updates. In addition, other new features such as cost index are also described in this document.

New add-on modules and features in version 6.2:

CAD Integrator

for Windows operating systems

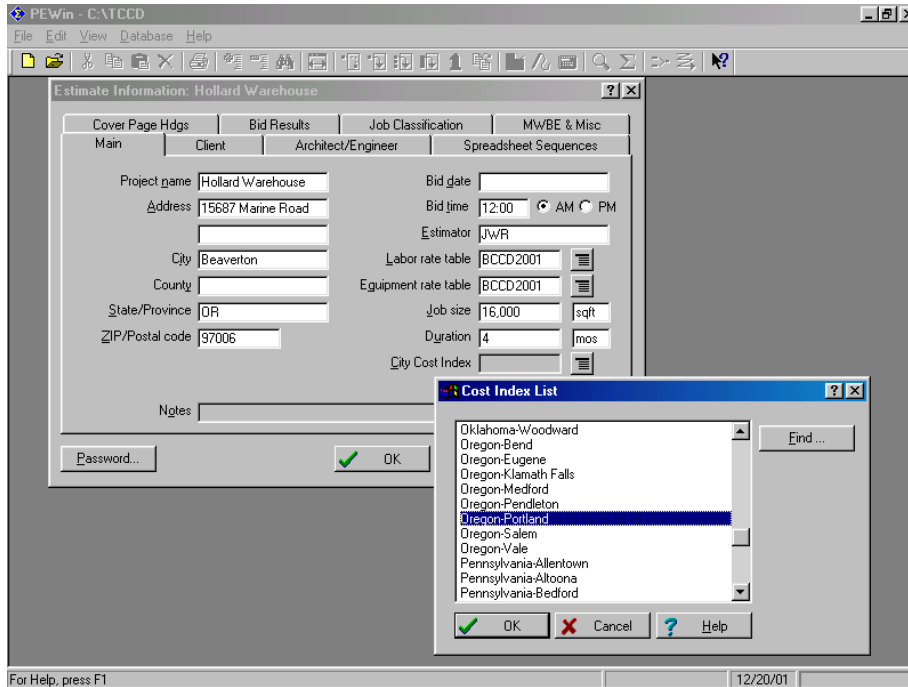


CAD Integrator recognizes CAD objects and attributes, and maps them to assemblies/items to eliminate any need for manual takeoff.

- Assuring universal recognition of CAD objects and attributes, CAD Integrator complies with industry standard definitions as prescribed by Industry Foundation Classes or IFCs (version 2.0).
- Maps IFC CAD objects and their attributes to assemblies/items and their variables, eliminating the need for manual takeoff of CAD objects.
- Design changes made to your CAD drawings can be automatically synchronized with your estimate to update cost information.
- Highlighting a CAD object in the browser displays all the dimensional and cost information for the object.
- Highlighting a CAD wall object in your browser also highlights the same object in a schematic of your drawing.
- Incomplete takeoff information is automatically logged for review.

- Compatible with IFC (version 2.0) CAD programs such as Graphisoft ArchiCAD 7.0 and Microsoft Visio.
- CAD Integrator is an available module for both Estimating Standard and Estimating Extended.

Cost Index



The Cost Index enhancement automatically produces estimates based on a specific geographic location

- Automatically generates or reprices estimates based upon the specific geographic location of your project.
- Pricing is adjusted by factors or sets of factors at the phase/CSI level.
- Phase/CSI level factors are stored in index tables.
- Factors or sets of factors can be either user-defined or derived from a published source or prices such as R.S. Means.
- Cost index is now included in Estimating Standard and Estimating Extended.

Pricer

- Automates the process of updating database prices.
- Reads a price update file and replaces existing prices with current prices on an item-by-item basis.

- Users are able to reprice a database by phase/item code, price code, or WBS value.
- Complies with the Uniform Price Code (UPC) standard.
- Allows updates to all categories of Estimating, i.e. labor, materials, equipment, subcontract, and other.
- Pricer is now included in Estimating Standard and Estimating Extended.

Additional enhancements

- Emailing estimates is now possible thanks to support for stand-alone estimate that enables users to send files directly from Microsoft Outlook or any MAPI-compliant mail system.
- Headers and footers are now available on the cover page.
- A signature block can be printed at bottom of the totals page, a helpful feature for documenting approval of estimates and change orders.
- The combine assembly feature, available on sorts and reports, is useful when the same assembly is taken off multiple times. Combining all like assemblies simplifies review and analysis of estimates. In addition, this feature is required with CAD Integrator as this module manages identical objects in this manner.

You can receive the latest enhancements in version 6.2 by subscribing to a Timberline service plan. As a service plan subscriber, you not only receive the most recent version of software, but toll-free telephone support (within the U.S. and Canada) and access to online services. To receive more information on Timberline service plans, please call our service contract consultant, **Mindy Grover**, at **1-800-944-3609**.