

Project Management Preview

Timberline Project Management will simplify the way you manage projects. Why? Because we've set out to achieve a fundamental goal that, until now, no other project management software has been able to accomplish—true integration between your accounting, estimating and project management teams.

Seamless data sharing

With the introduction of Timberline Project Management, scheduled for distribution in 2002, your entire project management team can instantly access critical cost control details and financial data through live integration with Timberline's accounting and estimating systems. As a project manager, you can access up-to-the-minute costs, contract and document information (security privileges permitting). You can also issue subcontracts, change orders, purchase orders and other documents, then release these items to accounting for their review, approval and use. With Timberline's integrated software, there's no need for duplicate data entry.

Convenient, centralized data

Timberline's integrated system gives your company one central location to enter, manage and retrieve all related project information. For example, you can store company contact information in Timberline Address Book, a common contact database that can also be accessed by your accounting and estimating teams. So, no matter what area of the company you work in, you can count on having the most current contact information available.

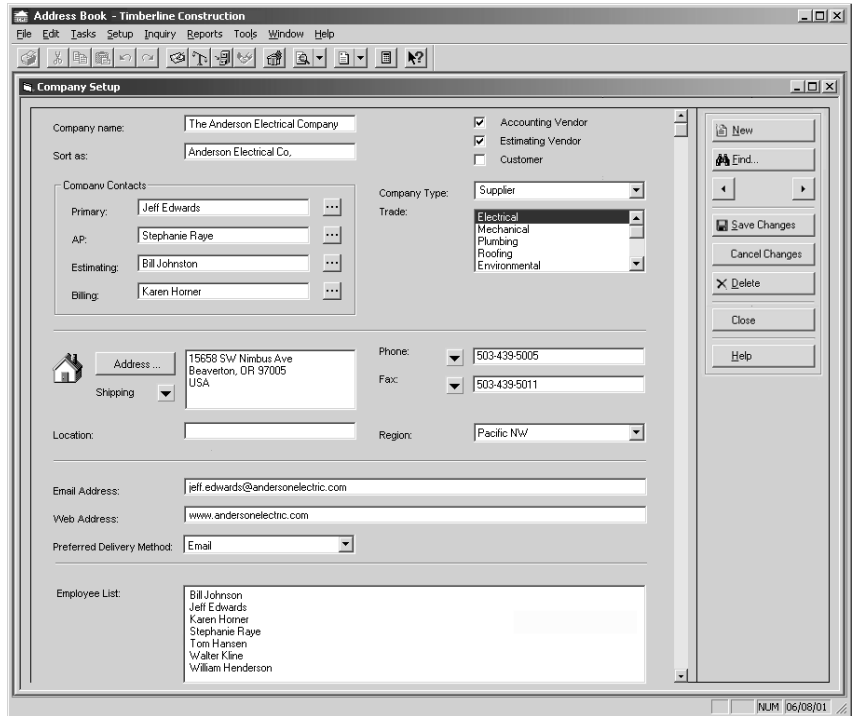
Real-time information for real-time decision making

With Timberline, you can be sure all the project information you receive is real-time. Unlike other links between project management and accounting software, Timberline doesn't require you to synchronize these two systems to make sure you have the most recent cost information. And, whenever a change is made in one application, it will automatically be reflected in all other affected applications, giving you confidence that the costs and project information you see is current and accurate.

Create, track and retrieve documents

Timberline provides tools to create and track common project documents, like requests for information (RFIs), submittals and transmittals. Additionally, custom logs allow you to track virtually anything you'd like, such as

Timberline Address Book lets you store detailed vendor and customer contact information in one common database which can be accessed by both the accounting and project management teams.



correspondence, punch lists, safety notices and other important documents. And with Timberline's inquiry and reporting capabilities, you can easily see the status of all these documents and what's left to do to ensure nothing falls through the cracks.

Easy to learn. Easy to use.

Project Management is designed to work the way you do. The software is straightforward and easy to learn because electronic documents mirror paper documents. You can also use the software's online help system as you work to instantly retrieve the help you need to perform common tasks. Or for more detail, sit back and watch a visual run-through of the procedure. Whichever assistance you choose, you'll see how easily you can learn the software and how quickly you'll get new project managers up to speed.

Features

- Create, track and distribute documents, such as RFIs, submittals and transmittals
- Email and fax documents directly from the entry screen
- Issue contracts, subcontracts, potential change orders, prime contract change orders and change order budget revisions, then release these items to accounting for review, approval and use
- Access contract status, estimates, forecasts, change orders and cost details
- Set up jobs and enter contact information in one centralized location
- Access pre-designed reports and inquiries or design your own custom reports using Timberline's report writer or Crystal Reports®
- Secure access to information by individual or by job

Integration

Information shared between accounting and project management includes:

- Job setup
- Budgets
- Prime contracts, subcontracts and purchase orders
- Potential change orders
- Change orders
- Forecasts
- Labor and equipment cost details
- Percent completes and production quantities
- Reports and inquiries
- Prime contract, purchase order and subcontractor change orders
- Accounts payable invoices and checks
- Cost code lists
- Address Book with complete vendor and customer contact information
- System setup, including field descriptions, security and more

Reports and Inquiries

Below are just a few of the 75-plus standard reports that come with Project Management:

- Job status overview combining accounting and project management detail on one report
- Job cost by date range, monthly cost and cost type analysis
- Contract status showing accounts receivable invoices and payments
- Material delivery
- Commitments showing accounts payable invoices and checks
- RFI overdue and unanswered logs, summaries and dunning letters
- Submittal logs by company, status and summary report
- Transmittal logs by date, company and status
- Insurance and lien documents

The company behind the software

A publicly traded company (Nasdaq: TMBS), Timberline is helping 25,000 companies worldwide reach and manage record levels of growth. Timberline itself has been listed among *Forbes'* "200 Best Small Companies in America" for five years and recently became the first accounting, construction, and property management software company to achieve Support Center Practices (SCP) Certification for excellence in providing technical support services to its customers.

TIMBERLINE®

Timberline Software Corporation
800.628.6583 • Fax: 503.439.5010
timberline.com

Your Timberline Solution Provider:

To learn more about Timberline Project Management, please contact your local Timberline Solution Provider or call 800.628.6583 for the name of a Solution Provider near you.

TIMBERLINE is a registered Mark of Timberline Software Corporation. All other trademarks or registered trademarks are the property of their respective holders. 8/01